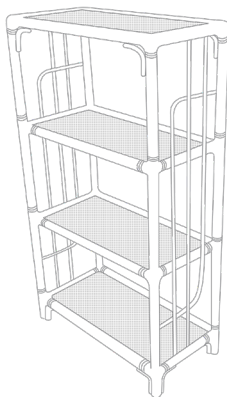


OLIVER BONAS

TORTUGA SHELVING UNIT



We hope you love your purchase, however if you aren't completely happy,
please retain your packaging to ensure its safe return

Each Tortuga piece has been lovingly handmade and hand finished by skilled artisans in Indonesia
Due to this, each piece is unique and variations in colour and finish may occur

RATTAN

Rattan is a natural material and variations in shape, colour and finish may occur
The colouring will vary making each piece unique

To help maintain its natural beauty please keep rattan dry. Not suitable
for wet or humid environments as it may go mouldy
Do not position in front of radiators as heat may over dry the rattan and cause it to split

Not suitable for prolonged outdoor use. Keep out of the rain and extreme weathers
Avoid direct sunlight as this may discolour your rattan
Rotate table for even wear and tear

To protect the surface, we recommend using a place mat or coaster

Take care not to overload and ensure weight is evenly distributed
Max weight 10kg per shelf

Do not drag as this may weaken the joints and construction

Not suitable for bathroom or children's rooms

CLEANING

Wipe with a damp cloth, followed by a soft dry cloth. Any spills should be
wiped dry immediately to avoid discolouration and staining

Avoid abrasive cleaners

Keep away from fire

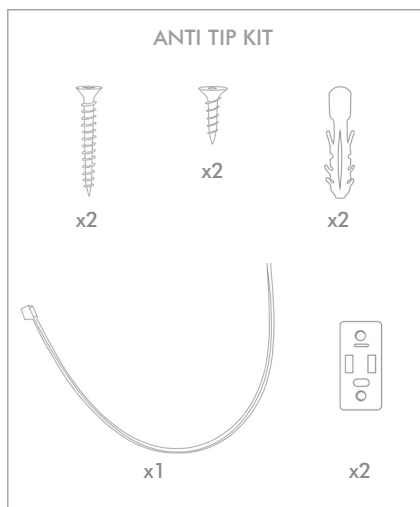
Retain this information for reference

Oliver Bonas
Unit F, Davis Road Industrial Park
Chessington KT9 1TQ

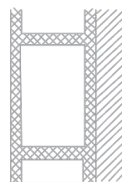
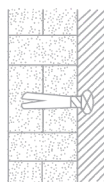
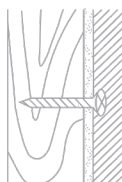
Oliver Bonas Ireland Ltd
The Black Church St Mary's Place
Dublin 7 Republic of Ireland

OLIVER BONAS

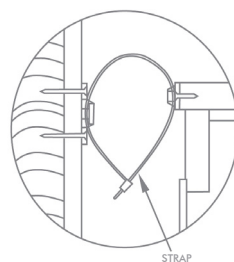
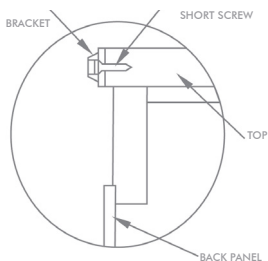
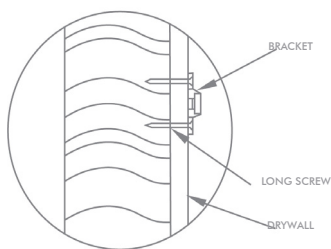
ANTI TIP KIT



Please use the anti tip kit provided for safety. Please ensure the correct fittings are used for the chosen wall substrate:



ASSEMBLY



1. Mark the location of the hole on the wall using bracket approx 1" below the top of furniture. Predrill the holes at marked location & insert wall plug & secure using long screws.

2. Move the furniture to its final position against the wall and mark the location of the wall bracket on the back of the furniture. The bracket that attaches to the furniture must go into the solid wood piece at the top, not into the thinner back panel. Move the furniture away from the wall and place a bracket on the mark. Mark and drill holes for the screws using a 3/32 drill bit. Attach the bracket to the furniture using the short screws.

3. Move the furniture to its final position and align the bracket on the furniture with the bracket on the wall. Thread the strap through the bracket as shown, and tighten until snug. Do not over-tighten.

IMPORTANT

Check that the wall bracket is firmly screwed into the stud, the furniture bracket is firmly attached to the frame, and the strap is snug.